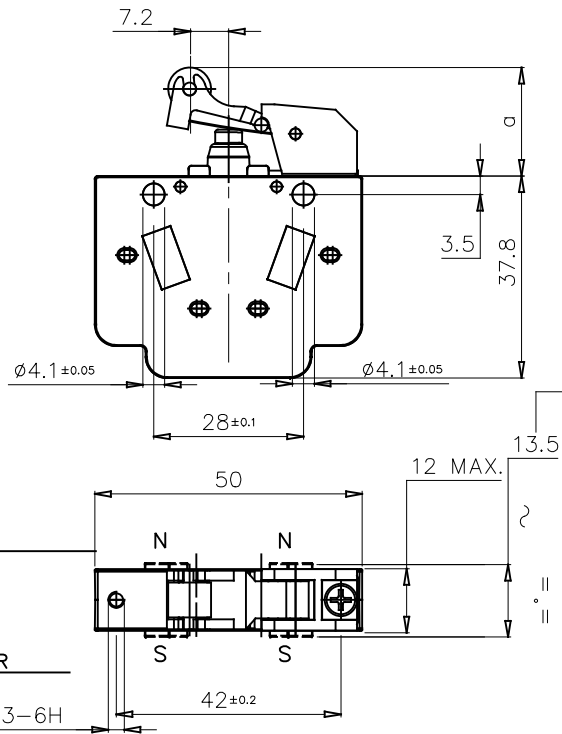
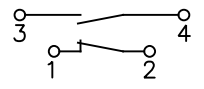


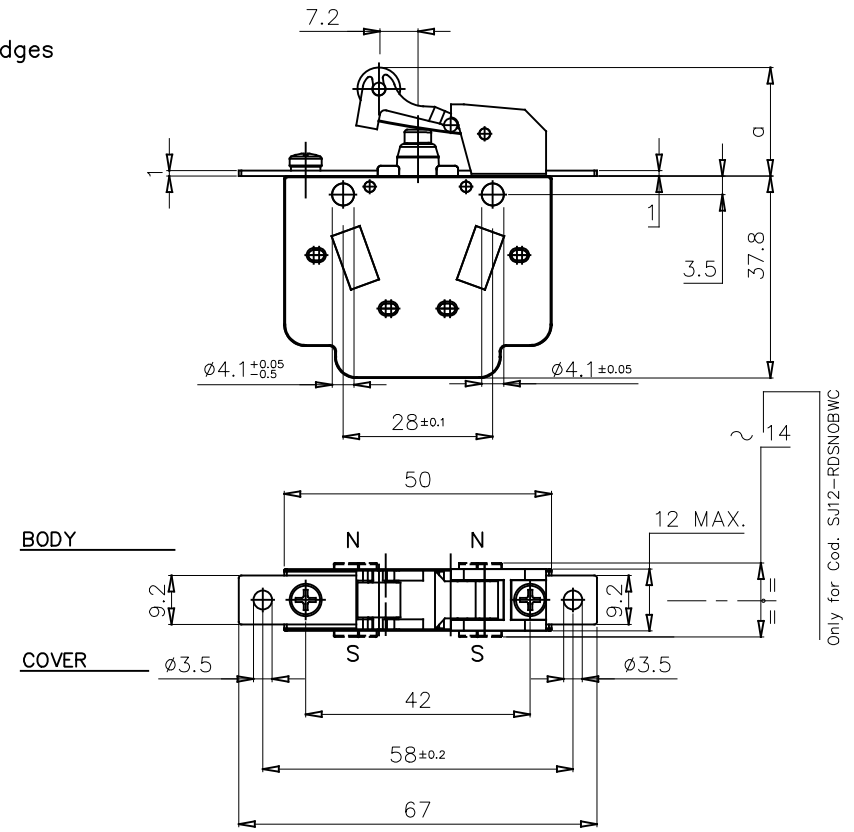
Galvanically isolated contact bridges



Only for Cod. SJ12-RNSNOBWC



MAX. OPERATING FORCE	N
	0,83
RELEASE FORCE	N
	3,2
REST POSITION	a mm
	20,1 ± 0,2
TRIPPING POSITION	a mm
	16,0 ± 0,2
RELEASE POSITION	a mm
	17,8 ± 0,2
OVER TRAVEL LIMIT	a mm
	14



Only for Cod. SJ12-RDSNOBWC

EXECUTIONS WITH FIXING DISTANCE 28 mm	
CODE	FEATURE
SJ12-RNSNOUW*	MICROSWITCH COMPLETE WITH LEVER - STD.TYPE CONTACTS
SJ12-RNGNOUW*	MICROSWITCH COMPLETE WITH LEVER - GOLD PLATE CONTACTS
SJ12-RNSNOBW*	MICROSWITCH COMPLETE WITH LEVER - WITH SOLID SILVER CONTACTS AND BLOWING MAGNETS

EXECUTIONS WITH FIXING DISTANCE 58 mm	
CODE	FEATURE
SJ12-RDSNOUW*	MICROSWITCH COMPLETE WITH LEVER - STD.TYPE CONTACTS
SJ12-RDGNOUW*	MICROSWITCH COMPLETE WITH LEVER - GOLD PLATE CONTACTS
SJ12-RDSNOBW*	MICROSWITCH COMPLETE WITH LEVER - WITH SOLID SILVER CONTACTS AND BLOWING MAGNETS

NOTE : PLACE THE PERMANENT MAGNETS SO THAT THE POLARITIES ARE AS SHOWN IN THE DRAWING

* COVER MATERIAL	
CODE LETTER	MATERIAL
C	PC
N	PA66
P	PEI

NOTE : 2 μm GOLDEN PLATING

◆◆◆◆ SIMBOLI UTILIZZATI PER IDENTIFICARE LA QUOTA IN REVISIONE DI MODIFICA

##○## SIMBOLO UTILIZZATO PER LE QUOTE SOGGETTE A CONTROLLO INTERNO

MODIFICHE
1   C.M. 0001
19/09/24
MU

3	2	1	Rifer.
			Funz.
			Accop.
			Cliente

			MATERIALE	TRATTAMENTO							
DATA	26/11/20	26/11/20	26/11/20	TOLLERANZE PER DIMENSIONI LINEARI ED ANGOLARI PRIVE DI INDICAZIONI DI TOLLERANZE SPECIFICHE UNI EN 22768-1 MOLTO GROSSOLANA GROSSOLANA MEDIA FINE	SCALA	1:1	SOSTITUISCE	A3			
FIRMA	GM	VELLUTINI	MR		REVISIONE	1	2		3	4	5
DESCRIZIONE				SNAP-ACTION MICROSWITCH (1 N.O. + 1 N.C.) IP67 WITH OPERATION LEVER				COD. VEDI TABELLA			
ISOLEX Milano Italy								DIS. ID10214			
								F. 1 di 1			