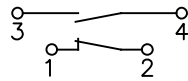
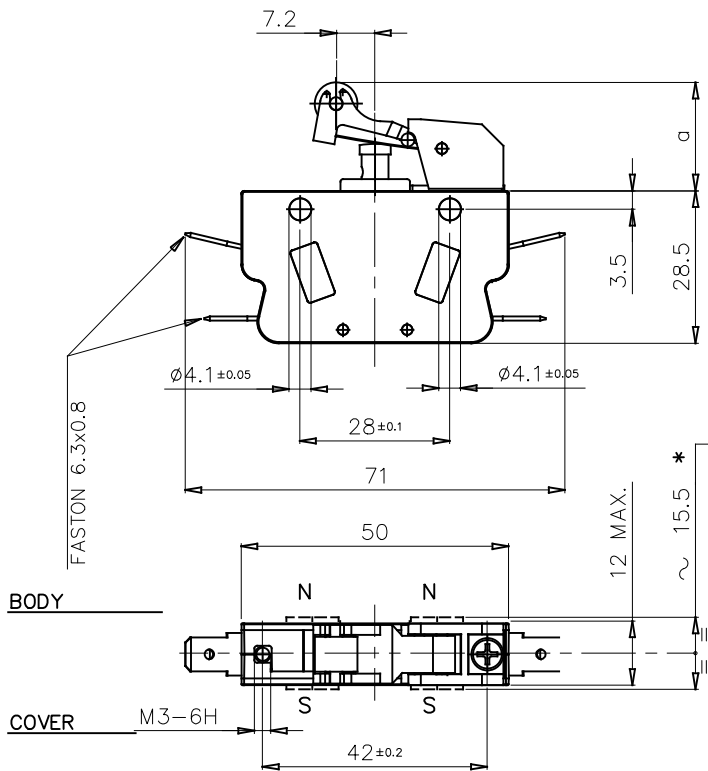


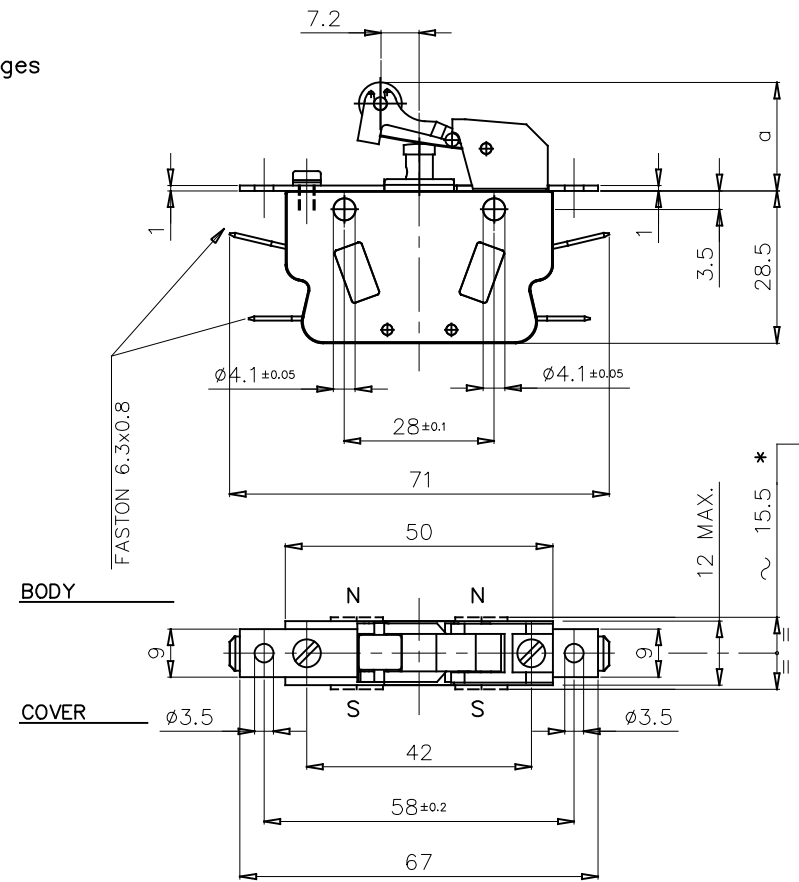
Galvanically isolated contact bridges



MAX. OPERATING FORCE	N
RELEASE FORCE	N
REST POSITION	a mm
TRIPPING POSITION	20,1±0,2
RELEASE POSITION	a mm
OVER TRAVEL LIMIT	14



Only for Cod. SJ21-RNSO0BWC



Only for Cod. SJ21-RDSO0BWC

EXECUTIONS WITH FIXING DISTANCE 28 mm	
CODE	FEATURE
SJ21-RNSOOUW*	MICROSWITCH COMPLETE WITH LEVER - STD.TYPE CONTACTS
SJ21-RNGOOUW*	MICROSWITCH COMPLETE WITH LEVER - GOLD PLATE CONTACTS
SJ21-RNSO0BW*	MICROSWITCH COMPLETE WITH LEVER - WITH SOLID SILVER CONTACTS AND BLOWING MAGNETS

EXECUTIONS WITH FIXING DISTANCE 58 mm	
CODE	FEATURE
SJ21-RDSOOUW*	MICROSWITCH COMPLETE WITH LEVER - STD.TYPE CONTACTS
SJ21-RDGOOUW*	MICROSWITCH COMPLETE WITH LEVER - GOLD PLATE CONTACTS
SJ21-RDSO0BW*	MICROSWITCH COMPLETE WITH LEVER - WITH SOLID SILVER CONTACTS AND BLOWING MAGNETS

NOTE : PLACE THE PERMANENT MAGNETS SO THAT THE POLARITIES ARE AS SHOWN IN THE DRAWING

NOTE : 2 μm GOLDEN PLATING

* COVER MATERIAL	
CODE LETTER	MATERIAL
C	PC
N	PA66
P	PEI

			MATERIALE	TRATTAMENTO	
DATA	06/06/23	06/06/23	06/06/23	TOLLERANZE PER DIMENSIONI LINEARI ED ANGOLARI PRIVE DI INDICAZIONI DI TOLLERANZE SPECIFICHE UNI EN 22768-1	SCALA 1:1
FIRMA	GM	MR	MR	MOLTO GROSSOLANA GROSSOLANA MEDIA FINE	SOSTITUISCE
				<input type="checkbox"/>	<input type="checkbox"/>
				<input checked="" type="checkbox"/>	<input type="checkbox"/>
				<input type="checkbox"/>	REVISIONE
				<input type="checkbox"/>	1 2 3 4 5 6 7

◊◊◊◊ SIMBOLI UTILIZZATI PER IDENTIFICARE LA QUOTA IN REVISIONE DI MODIFICA

##○## SIMBOLO UTILIZZATO PER LE QUOTE SOGGETTE A CONTROLLO INTERNO

MODIFICHE				
1	C.M.	0001		
		19/09/24		
		MU		

3	2	1	Rifer.
			Funz.
			Accop.
			Cliente



DESCRIZIONE
SNAP-ACTION MICROSWITCH SJ21 (1 N.O. + 1 N.C.) WITH OPERATION LEVER AND FASTON TERMINALS

COD. DIS.	VEDI TABELLA	F. 1
	ID10254	DI 1