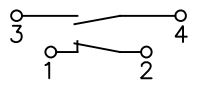
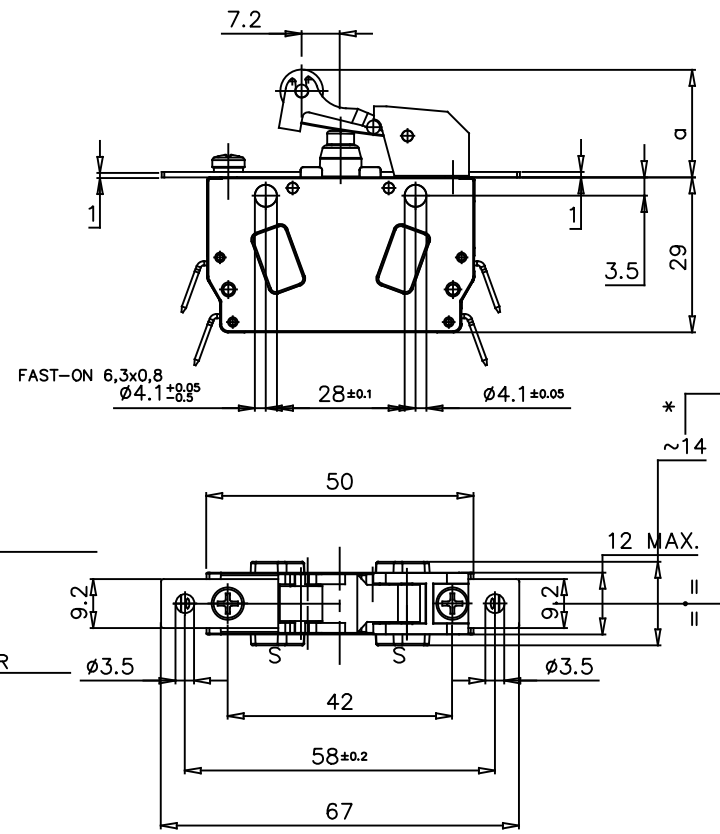


Galvanically isolated contact bridges

POSITIVE OPENING



MAX. OPERATING FORCE	N
RELEASE FORCE	0,83
REST POSITION	a mm 20,1±0,2
TRIPPING POSITION	a mm 16,0±0,2
RELEASE POSITION	a mm 17,8±0,2
OVER TRAVEL LIMIT	a mm 14



EXECUTIONS WITH FIXING DISTANCE 28 mm	
CODE	FEATURE
SJ22-RNSQOUY*	MICROSWITCH COMPLETE WITH LEVER - STD.TYPE CONTACTS
SJ22-RNGQOUY*	MICROSWITCH COMPLETE WITH LEVER - GOLD PLATE CONTACTS
SJ22-RNSQOBY*	MICROSWITCH COMPLETE WITH LEVER - WITH SOLID SILVER CONTACTS AND BLOWING MAGNETS

EXECUTIONS WITH FIXING DISTANCE 58 mm	
CODE	FEATURE
SJ22-RDSQOUY*	MICROSWITCH COMPLETE WITH LEVER - STD.TYPE CONTACTS
SJ22-RDGQOUY*	MICROSWITCH COMPLETE WITH LEVER - GOLD PLATE CONTACTS
SJ22-RDSQOBY*	MICROSWITCH COMPLETE WITH LEVER - WITH SOLID SILVER CONTACTS AND BLOWING MAGNETS

NOTE : PLACE THE PERMANENT MAGNETS SO THAT THE POLARITIES ARE AS SHOWN IN THE DRAWING

* COVER MATERIAL	
CODE LETTER	MATERIAL
C	PC
N	PA66
P	PEI

NOTE : 2 µm GOLDEN PLATING

◆◆◆◆ SIMBOLI UTILIZZATI PER IDENTIFICARE LA QUOTA IN REVISIONE DI MODIFICA

##○## SIMBOLO UTILIZZATO PER LE QUOTE SOGGETTE A CONTROLLO INTERNO

MODIFICHE	
2 C.M. 0001	
19/09/24	
MU	

3	2	1	Rifer.
			Funz.
			Accop.
			Cliente



DESCRIZIONE
SNAP-ACTION MICROSWITCH SJ22 PO (1 N.O. + 1 N.C.)
IP67 WITH OPERATION LEVER + FAST-ON 90°

SCALA	1:1	SOSTITUISCE	A3
REVISIONE	(1) (2) 3 4 5 6 7	COD. VEDI TABELLA	F. 1
DIS.	ID10267Y		BI 1