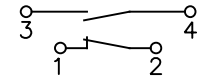
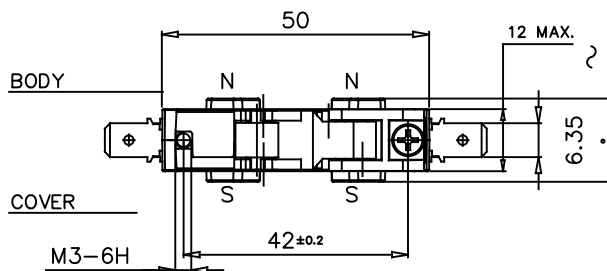
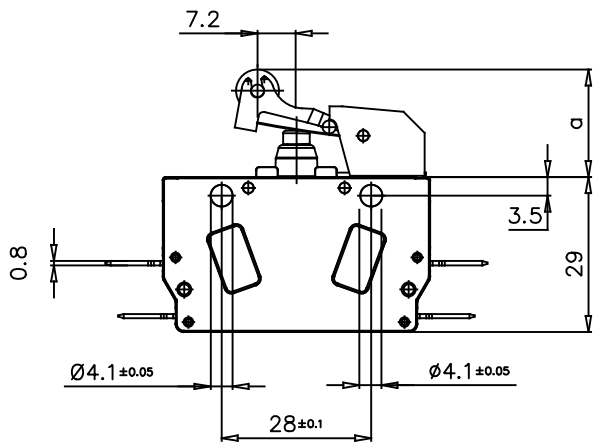
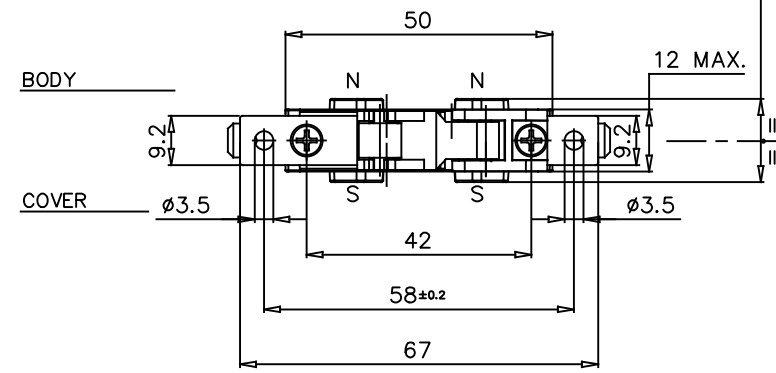
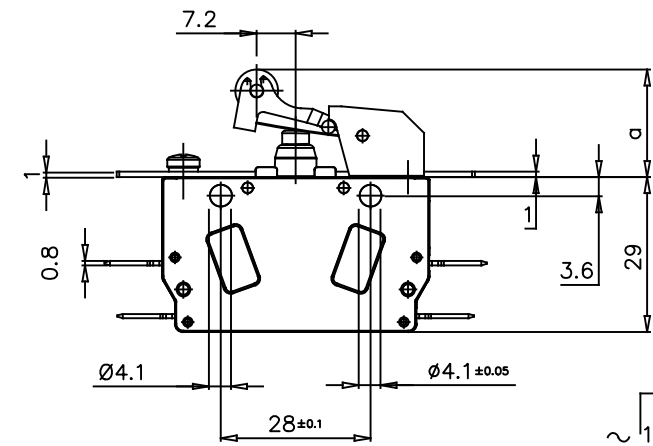


Galvanically isolated contact bridges



MAX. OPERATING FORCE	N
	0,83
RELEASE FORCE	N
	1
REST POSITION	a mm
	20,1±0,2
TRIPPING POSITION	a mm
	16,0±0,2
RELEASE POSITION	a mm
	17,8±0,2
OVER TRAVEL LIMIT	a mm
	14

Only for Cod. SJ22-RNS00BWC



Only for Cod. SJ22-RDS00BWC

EXECUTIONS WITH FIXING DISTANCE 28 mm	
CODE	FEATURE
SJ22-RNS00UW*	MICROSWITCH COMPLETE WITH LEVER - STD.TYPE CONTACTS
SJ22-RNG00UW*	MICROSWITCH COMPLETE WITH LEVER - GOLD PLATE CONTACTS
SJ22-RNS00BW*	MICROSWITCH COMPLETE WITH LEVER - WITH SOLID SILVER CONTACTS AND BLOWING MAGNETS

EXECUTIONS WITH FIXING DISTANCE 58 mm	
CODE	FEATURE
SJ22-RDS00UW*	MICROSWITCH COMPLETE WITH LEVER - STD.TYPE CONTACTS
SJ22-RDGO0UW*	MICROSWITCH COMPLETE WITH LEVER - GOLD PLATE CONTACTS
SJ22-RDS00BW*	MICROSWITCH COMPLETE WITH LEVER - WITH SOLID SILVER CONTACTS AND BLOWING MAGNETS

NOTE : PLACE THE PERMANENT MAGNETS SO THAT THE POLARITIES ARE AS SHOWN IN THE DRAWING

* COVER MATERIAL	
CODE LETTER	MATERIAL
C	PC
N	PA66
P	PEI

NOTE : 2 μm GOLDEN PLATING

MATERIALE			TRATTAMENTO					
DATA	DISEGNATO	APPROVATO	VISTO C.C.	TOLLERANZE PER DIMENSIONI LINEARI ED ANGOLARI PRIVE DI INDICAZIONI DI TOLLERANZE SPECIFICHE UNI EN 22768-1		SCALA	SOSTITUISCE	A3
08/02/24	08/02/24	08/02/24	08/02/24	MOLTO GROSSOLANA GROSSOLANA MEDIA FINE		1:1		
FIRMA	FDS	RIZZI	RIZZI			REVISIONE	1 2 3 4 5 6 7	

SIMBOLI UTILIZZATI PER IDENTIFICARE LA QUOTA IN REVISIONE DI MODIFICA
 SIMBOLO UTILIZZATO PER LE QUOTE SOGGETTE A CONTROLLO INTERNO

MODIFICHE
1] C.M. 0001 19/09/24 MU

3	2	1	Rifer.
			Funz.
			Accop.
			Ciente



DESCRIZIONE
SNAP-ACTION MICROSWITCH SJ22 (1 N.O. + 1 N.C.)
IP67 WITH OPERATION LEVER

COD. DIS.	VEDI TABELLA	F. 1
	ID10274	BI 1