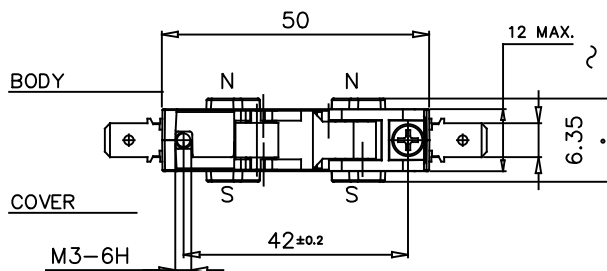
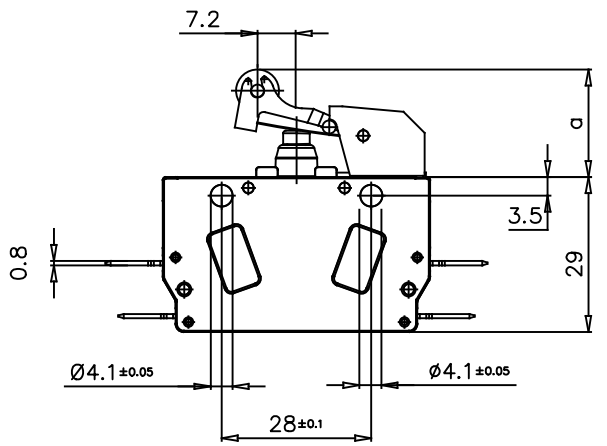
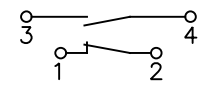


Galvanically isolated contact bridges

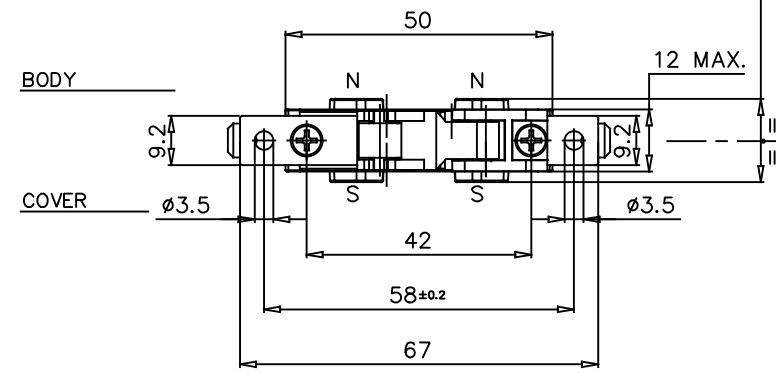
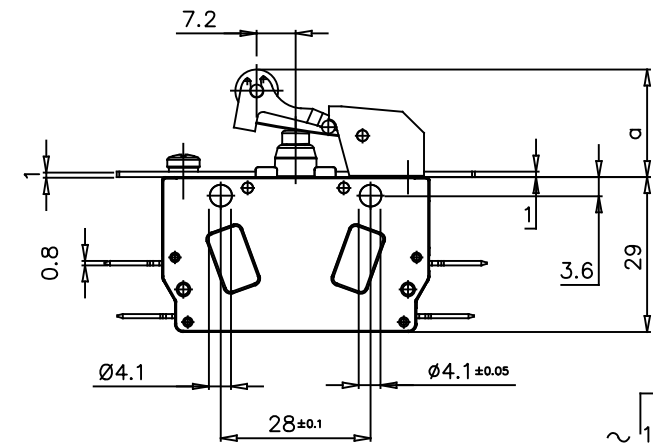
POSITIVE OPENING



15.6
Only for Cod. SJ22-RNS00BYC



MAX. OPERATING FORCE	N
	0,83
RELEASE FORCE	N
	1
REST POSITION	a mm
	20,1±0,2
TRIPPING POSITION	a mm
	16,0±0,2
RELEASE POSITION	a mm
	17,8±0,2
OVER TRAVEL LIMIT	a mm
	14



~ 14
Only for Cod. SJ22-RDS00BYC

EXECUTIONS WITH FIXING DISTANCE 28 mm	
CODE	FEATURE
SJ22-RNS00UY*	MICROSWITCH COMPLETE WITH LEVER - STD.TYPE CONTACTS
SJ22-RNG00UY*	MICROSWITCH COMPLETE WITH LEVER - GOLD PLATE CONTACTS
SJ22-RNS00BY*	MICROSWITCH COMPLETE WITH LEVER - WITH SOLID SILVER CONTACTS AND BLOWING MAGNETS

EXECUTIONS WITH FIXING DISTANCE 58 mm	
CODE	FEATURE
SJ22-RDS00UY*	MICROSWITCH COMPLETE WITH LEVER - STD.TYPE CONTACTS
SJ22-RDGO0UY*	MICROSWITCH COMPLETE WITH LEVER - GOLD PLATE CONTACTS
SJ22-RDS00BY*	MICROSWITCH COMPLETE WITH LEVER - WITH SOLID SILVER CONTACTS AND BLOWING MAGNETS

NOTE : PLACE THE PERMANENT MAGNETS SO THAT THE POLARITIES ARE AS SHOWN IN THE DRAWING

NOTE : 2 μm GOLDEN PLATING

* COVER MATERIAL	
CODE LETTER	MATERIAL
C	PC
N	PA66
P	PEI

◆◆◆◆ SIMBOLI UTILIZZATI PER IDENTIFICARE LA QUOTA IN REVISIONE DI MODIFICA

##○## SIMBOLO UTILIZZATO PER LE QUOTE SOGGETTE A CONTROLLO INTERNO

MODIFICHE	
1] C.M. 0001	
19/09/24	
MU	

3	2	1	Rifer.
			Funz.
			Accop.
			Cliente

MATERIALE			TRATTAMENTO				
DATA	DISEGNATO	APPROVATO	VISTO C.C.	TOLLERANZE PER DIMENSIONI LINEARI ED ANGOLARI PRIVE DI INDICAZIONI DI TOLLERANZE SPECIFICHE UNI EN 22768-1 MOLTO GROSSOLANA GROSSOLANA MEDIA FINE	SCALA	SOSTITUISCE	A3
08/02/24	08/02/24	08/02/24			1:1		
FIRMA	FDS	RIZZI	RIZZI		REVISIONE	1 2 3 4 5 6 7	
DESCRIZIONE				COD. VEDI TABELLA		F. 1	
ISOLEX ISOLEX Milano Italy				SNAP-ACTION MICROSWITCH SJ22 PO (1 N.O. + 1 N.C.) IP67 WITH OPERATION LEVER		DIS. ID10274Y	